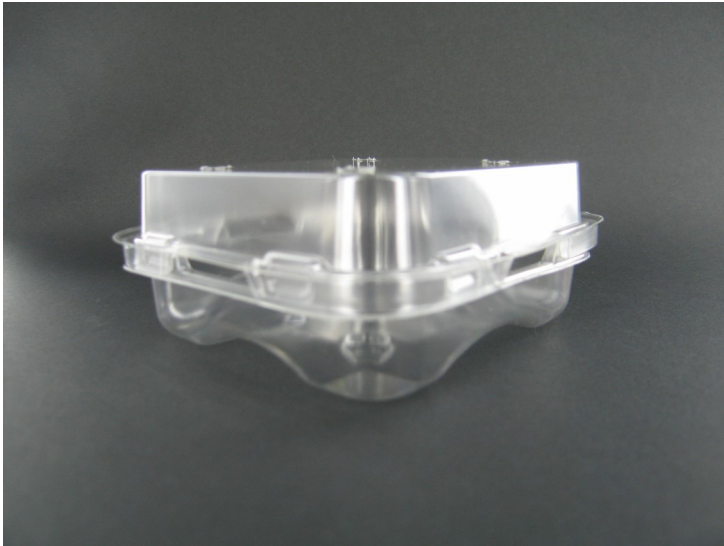
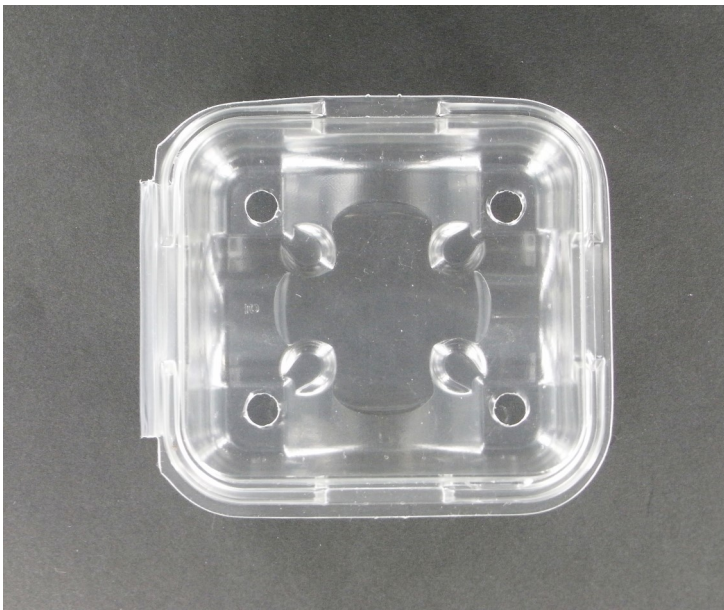


Caled Containers Product Specification

125g Raspberry Clam Punched



| BASE with hinged lid | |
|----------------------|--|
| Code | CSC11-P |
| Weight | 19 grams \pm 1g |
| Material | PET |
| Colour | Clear |
| Film Thickness | .45mm \pm .02mm |
| Base Packaging | 441/ Pack |
| UV Protection | None– Do not expose to direct sunlight |



| Dimensions Including Lid | |
|--------------------------|-----------------|
| External Length | 117mm \pm 1mm |
| External Width | 106mm \pm 1mm |
| Depth | 46mm \pm 1mm |
| Internal Length | 100mm \pm 1mm |
| Internal Width | 90mm \pm 1mm |

ALL MATERIALS USED ARE APPROVED FOR FOOD CONTACT AND COMPLY WITH : Australian Standards 2070:1999

FOR ALL SALES ENQUIRIES PLEASE CONTACT

Caled Containers
PO Box 2 Huonville 7109 TAS 29 Maxfields Rd Nth Franklin 7113 TAS
Phone 03 6266 3145 E-mail office@caledcontainers.com.au
Web www.caledcontainers.com.au

Issue date Oct 2020